



Külsövat

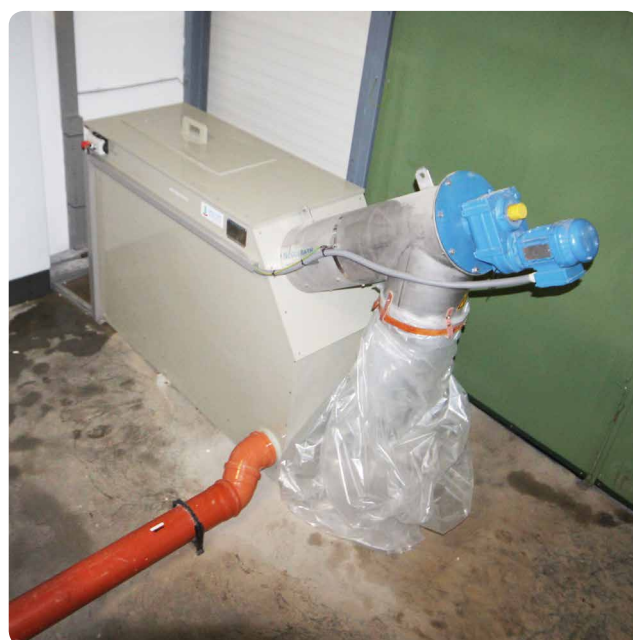
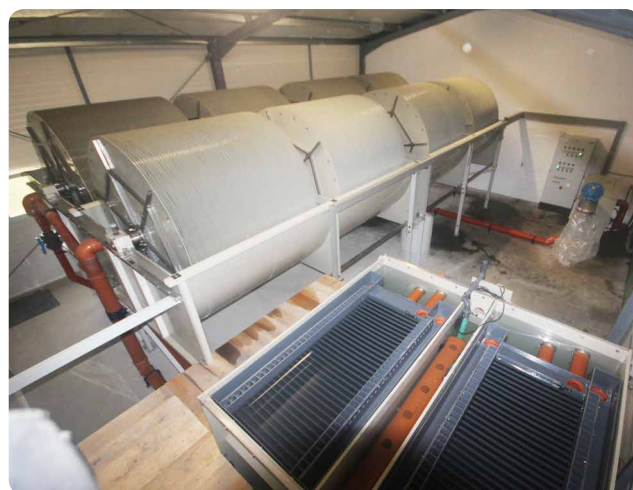
HUNGARY

Külsövat

Design data	inlet	outlet
Size		
Daily water flow	80 m ³ /d	
Peak flow	13 m ³ /h	
BOD	48 kg/d	≤ 15 mg/l
COD	96 kg/d	≤ 60 mg/l
TSS	40 kg/d	≤ 35 mg/l
T-N	9,6 kg/d	≤ 50 mg/l

Ø 2 m above ground unit in PP tank

Type	2x STK-2.000-2.399/4
Disc surface	4.798 m ²
Lamella Separator	LMS-14/1
Date of manufacture	2011



System S&P GmbH

Ahornstraße 27
74592 Kirchberg an der Jagst

Fon +49 (0)7954 9804-0

Fax +49 (0)7954 9804-20

Mail info@system-s-and-p.de

Web www.system-s-and-p.de

